

PREMIUM

Hydraulic Press Brake

State-of-the-art CNC Hydraulic press brake

HIGH QUALITY AND PERFORMANCE



PREMIUM

Hydraulic CNC controlled press brake

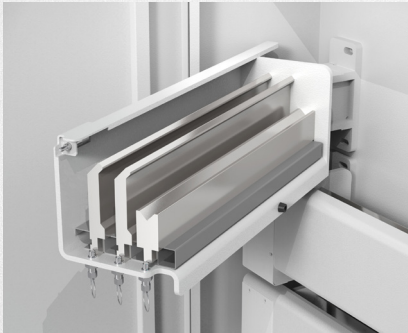
STANDARD FEATURES

Axis:	4 Axis (Y1, Y2, X, R) - Optional 6-axis (Y1, Y2, X, R, Z1, Z2) Y Axis Accuracy $\pm 0.01\text{mm}$ Y Axis Repeat Accuracy $\pm 0.01\text{mm}$ Workpiece straightness $\leq \pm 0.3/1000\text{mm}$ X Axis Accuracy $\pm 0.05\text{mm}$ R Axis Accuracy $\pm 0.1\text{mm}$
CNC Controller:	Cybelec Cybtouch 12 (4-axis) Cybtouch 15 (6-axis)
Top Tools:	Promecam type top tooling
Bottom Tools:	V16, V22, V35, V50 Bottom Tooling (40 TN - 135 TN) Special 4V Die Bottom Tooling from 170 TN
Tool Clamping:	Promecam Type Fast Clamping System (Vertical and horizontal top tool disassembly and assembly system)
Crowning system:	Motorized CNC
Hydraulic pump:	ECKERLE pump with WANNAN Motor
Hydraulic valves:	HAWE/Hoerbiger hydraulic system
Electric components:	Schneider Electric
Servo drives of X- and R-axis:	ESTUN
Backgauge System:	CNC Controlled Motorized Backgauge (X:750 mm) + (R:250 mm)
Backgauge fingers:	Standard 2 pieces / 4 pieces on machines with 6m bending length.
Safety system:	DSP AP + MCS Laser protection system
Linear encoders for pressing beam measurement:	Givi Misure (Italy)
Machine frame:	Heavy and stress relieved welded frame with decoupled C-bracket for linear encoder
Front support arm construction:	Quick-set front support arms w/MINK brushes, horizontal guiding on linear rail & easy height adjustment w/hand wheel
Front support arms:	Standard 2 pieces / 4 pieces on machines with 6m bending length.
Foot switch:	Double pedal foot switch w/anti-panic step & emergency stop button.
Rear side safety:	Rear Door system with safety sensors.
Side Doors	Easy openable side doors secured with safety sensors.
Side door right:	Electrical cabinet
Side door left:	Tool storage divided into three functional areas: 1. The top area is for storing less frequently used lightweight items. 2. The middle area is the rotating tool storage shelves for storing both punches and dies. 3. The bottom area also has tool slots for small tools, commonly used measuring tools, wrenches, and other tools.
Documentation:	CE-Declaration, instruction manual (DK, EN, DE)

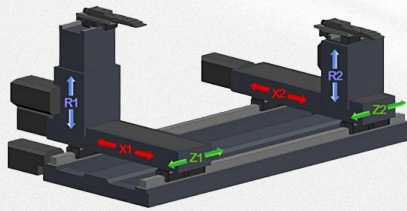
PREMIUM

Hydraulic CNC controlled press brake

GENERAL FEATURES



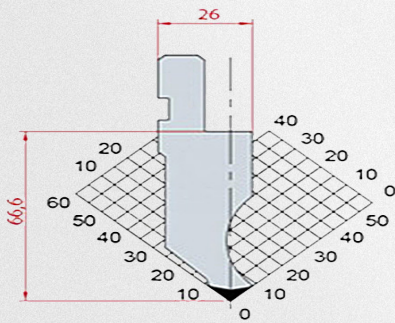
Standard **tool storage**



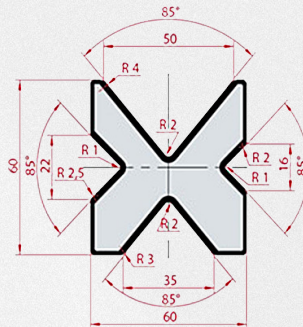
Back gauge system up to **6-axis**



DSP AP + MCS safety system



Promecam
Top tool



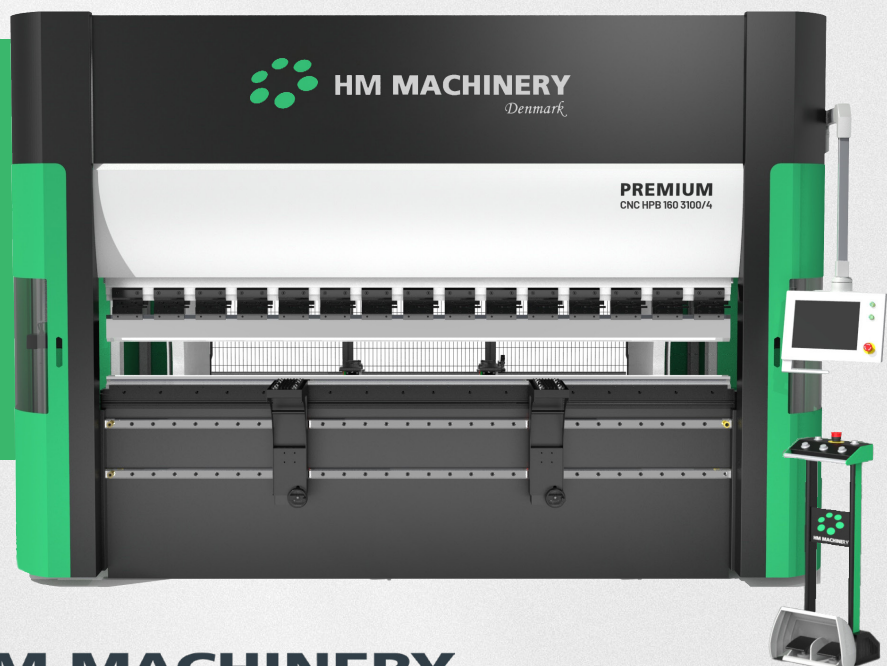
Promecam
Bottom tool



CybeleC Cybtouch 12

OPTIONAL EQUIPMENT:

- 6-axis back gauge with servo motor
- Air cooler
- Sheet follower BF-01 180 kg/pce
- Sheet follower UP-180 180 kg/pce



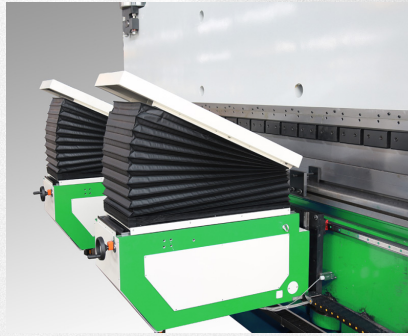
PREMIUM

Hydraulic CNC controlled press brake

OPTIONAL FEATURES



Load: 180KG
UP 180



Load: 380KG
UP 380



Load: 180KG
BF-01

Rear view



PREMIUM

Hydraulic CNC controlled press brake

SPECIFICATIONS & MODELS

Technical Specification/Model		HPB 50 1250/4	HPB 50 1500/4	HPB 80 1500/4	HPB 60 2000/4	HPB 100 2000/4	HPB 100 2600/4	HPB 100 3100/4
	Nominal Force KN	500	500	800	600	1000	1000	1000
	Bending Length mm	1250	1500	1500	2000	2000	2600	3100
	Column Distance mm	850	1080	1080	1450	1450	2030	2450
	Ram Stroke mm	160	160	160	160	200	200	200
	Opening Height mm	410	410	410	410	440	440	440
	Oil volume	120	145	145	195	195	250	340
	Throat depth	400	400	400	400	400	400	400
Ram Speed	Down Speed mm/s	150	150	150	120	120	135	150
	Pressing mm/s	10	10	10	10	10	10	10
	Return Speed mm/s	160	160	160	150	150	140	140
Electrical	Main Motor Power KW	5,5	5,5	5,5	5,5	7,5	7,5	7,5
	Working voltage	380	380	380	380	380	380	380
	Nominal current fuse	24A	25A	25A	25A	40A	40A	40A
	Total connected load	16A	16A	16A	16A	16A	16A	16A
	Control voltage	220AC	220AC	220AC	220AC	220AC	220AC	220AC
	Frequency	50	50	50	50	50	50	50
	Total connected load	-	-	-	-	10,7	10,7	10,7
	Phase of electricity	3	3	3	3	3	3	3
Backgauge Data Sheet Reference	X Axis travel (mm)	500	500	500	750	750	750	750
	X Axis working speed mm/s	400	400	400	400	400	400	400
	X Axis Accuracy mm	±0.05	±0.05	±0.05	±0.05	±0.05	±0.05	±0.05
	R Axis travel mm	120	120	120	250	250	250	250
	R Axis working speed mm/s	100	100	100	100	100	100	100
	R Axis Accuracy mm	±0.1	±0.1	±0.1	±0.1	±0.1	±0.0	±0.1
	Z Axis travel mm	500	750	750	800	800	1350	1850
	Z Axis working speed mm/s	600	600	600	600	600	600	600
	Z Axis Accuracy mm	±0.1	±0.1	±0.1	±0.1	±0.1	±0.1	±0.1
	Y Axis Accuracy mm	±0.01	±0.01	±0.01	±0.01	±0.01	±0.01	±0.01
	Y Axis Repeat Accuracy mm	±0.01	±0.01	±0.01	±0.01	±0.01	±0.01	±0.01
	Workpiece straightness mm	≤±0.3/1000	≤±0.3/1000	≤±0.3/1000	≤±0.3/1000	≤±0.3/1000	≤±0.3/1000	≤±0.3/1000
	Bending angle accuracy (°)	≤±1	≤±1	≤±1	≤±1	≤±1	≤±1	≤±1
Dimension	Length mm	2220	2470	2470	2970	2970	3570	4070
	Width mm Without front support With front support	1620 1750	1620 1935	1620 1935	1720 2035	1720 2035	1720 2035	1720 2035
	Height mm	2770	2770	2770	2770	2870	2870	2870
	Approx.Weight (KG)	4680	5280	5980	7180	7880	8630	9245



PREMIUM

Hydraulic CNC controlled press brake

SPECIFICATIONS & MODELS

Technical Specification/Model		HPB 100 4100/4	HPB 135 3100/4	HPB 160 2600/4	HPB 160 3100/4	HPB 160 4100/4	HPB 200 2600/4
	Nominal Force KN	1000	1350	1600	1600	1600	2000
	Bending Length mm	4100	3100	2600	3100	4100	2600
	Column Distance mm	3420	2450	1950	2450	3420	1950
	Ram Stroke mm	200	200	200	200	200	250
	Opening Height mm	440	440	440	440	440	440
	Oil volume	590	340	250	340	590	250
	Throat depth	400	400	400	400	400	400
Ram Speed	Down Speed mm/s	180	150	135	150	180	150
	Pressing mm/s	10	10	10	10	10	10
	Return Speed mm/s	140	140	130	130	130	140
Electrical	Main Motor Power KW	7,5	11	11	11	11	15
	Working voltage	380	380	380	380	380	380
	Nominal current fuse	40A	63A	63A	63A	63A	63A
	Total connected load	16A	25A	25A	25A	25A	32A
	Control voltage	220AC	220AC	220AC	220AC	220AC	220AC
	Frequency	50	50	50	50	50	50
	Total connected load	10,7	15,2	15,2	15,2	15,2	19,2
	Phase of electricity	3	3	3	3	3	3
Backgauge Data Sheet Reference	X Axis travel (mm)	750	750	750	750	750	750
	X Axis working speed mm/s	400	400	400	400	400	400
	X Axis Accuracy mm	±0.05	±0.05	±0.05	±0.05	±0.05	±0.05
	R Axis travel mm	250	250	250	250	250	250
	R Axis working speed mm/s	100	100	100	100	100	100
	R Axis Accuracy mm	±0.1	±0.1	±0.1	±0.1	±0.1	±0.1
	Z Axis travel mm	2850	1850	1350	1850	2850	1350
	Z Axis working speed mm/s	600	600	600	600	600	600
	Z Axis Accuracy mm	±0.1	±0.1	±0.1	±0.1	±0.1	±0.1
	Y Axis Accuracy mm	±0.01	±0.01	±0.01	±0.01	±0.01	±0.01
	Y Axis Repeat Accuracy mm	±0.01	±0.01	±0.01	±0.01	±0.01	±0.01
	Workpiece straightness mm	≤±0.3/1000	≤±0.3/1000	≤±0.3/1000	≤±0.3/1000	≤±0.3/1000	≤±0.3/1000
	Bending angle accuracy (°)	≤±1	≤±1	≤±1	≤±1	≤±1	≤±1
Dimension	Length mm	5070	4070	3570	4070	5070	3570
	Width mm						
	Without front support	1720	1800	1877	1877	1877	1927
	With front support	2035	2115	2060	2060	2060	2210
	Height mm	2870	2910	2970	2970	2970	3020
	Approx.Weight (KG)	10480	10680	10830	11710	13.380	13070



PREMIUM

Hydraulic CNC controlled press brake

SPECIFICATIONS & MODELS

Technical Specification/Model		HPB 225 3100/4	HPB 225 4100/4	HPB 250 3100/4	HPB 250 4100/4	HPB 300 3100/4	HPB 300 4100/4
	Nominal Force KN	2250	2250	2500	2500	3200	3200
	Bending Length mm	3100	4100	3100	4100	3100	4100
	Column Distance mm	2450	3420	2450	3420	2450	3420
	Ram Stroke mm	250	250	250	250	250	250
	Opening Height mm	480	480	480	480	480	480
	Oil volume	340	590	340	590	340	590
	Throat depth	400	400	400	400	400	400
Ram Speed	Down Speed mm/s	150	180	120	150	110	150
	Pressing mm/s	10	10	8	8	8	8
	Return Speed mm/s	120	120	110	110	100	100
Electrical	Main Motor Power KW	15	15	15	15	22	22
	Working voltage	380	380	380	380	380	380
	Nominal current fuse	63A	63A	63A	63A	63A	63A
	Total connected load	32A	32A	32A	32A	46A	46A
	Control voltage	220AC	220AC	220AC	220AC	220AC	220AC
	Frequency	50	50	50	50	50	50
	Total connected load	19,2	19,2	19,2	19,2	19,2	19,2
	Phase of electricity	3	3	3	3	3	3
Backgauge Data Sheet Reference	X Axis travel (mm)	750	750	750	750	750	750
	X Axis working speed mm/s	400	400	400	400	400	400
	X Axis Accuracy mm	±0.05	±0.05	±0.05	±0.05	±0.05	±0.05
	R Axis travel mm	250	250	250	250	250	250
	R Axis working speed mm/s	100	100	100	100	100	100
	R Axis Accuracy mm	±0.1	±0.1	±0.1	±0.1	±0.1	±0.1
	Z Axis travel mm	1850	2850	1850	2850	1850	2850
	Z Axis working speed mm/s	600	600	600	600	600	600
	Z Axis Accuracy mm	±0.1	±0.1	±0.1	±0.1	±0.1	±0.1
	Y Axis Accuracy mm	±0.01	±0.01	±0.01	±0.01	±0.01	±0.01
	Y Axis Repeat Accuracy mm	±0.01	±0.01	±0.01	±0.01	±0.01	±0.01
	Workpiece straightness mm	≤±0.3/1000	≤±0.3/1000	≤±0.3/1000	≤±0.3/1000	≤±0.3/1000	≤±0.3/1000
	Bending angle accuracy (°)	≤±1	≤±1	≤±1	≤±1	≤±1	≤±1
Dimension	Length mm	4070	5070	4070	5070	4070	5070
	Width mm						
	Without front support	1977	1977	2077	2077	2177	2177
	With front support	2260	2260	2360	2360	2460	2460
	Height mm	3070	3070	3070	3070	3170	3170
	Approx.Weight (KG)	14870	16180	15870	17180	17870	19180





HM Machinery | Part of **Scantool Group** | Industrivej 3-9, 9460 Brovst
| Denmark | Tel. +45 98 23 60 88 | info@scantool-group.dk